



'THE OVERVIEW EFFECT'  
ANN GRIM



'THE  
OVERVIEW  
EFFECT

ANN GRIM  
02 - 06 October 2019

**THE CELLO FACTORY**

Published in the occasion of the exhibition at

The Cello Factory  
33-34 Cornwall Rd, Waterloo,  
London  
SE1 8TJ

[agrim@anngrim.com](mailto:agrim@anngrim.com)  
All rights reserved



“The Overview Effect is a cognitive shift experimented by astronauts when the look at the Earth « hanging in the void » immediately understood to be a tiny, fragile ball of life, shielded and nourished by a paper-thin atmosphere. From space, national boundaries vanish, the conflicts that divide people become less important, and the need to create a planetary society with the united will to protect this « pale blue dot » becomes both obvious and imperative. “

The scenography of the exhibition is designed such as the viewer experiences the overview effect by looking down at Ann Grim’s paintings from a balcony, thus feeling the fragility of the submerged « Blue marble » as beautifully described by Apollo 17 crew.

Each painting is a cultural section through the infinitely large and the infinitely small, evoking a migratory crisis on Earth and space conquest, exploring the links between the livings: place, belonging, happiness, hopes and the perception of the future.

How happy are we where we are? What do we expect from the future and what does our opinion of the future say about our current position?

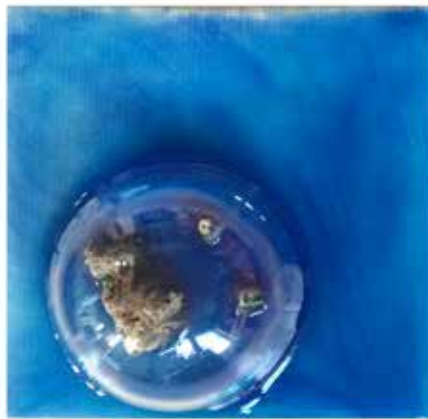
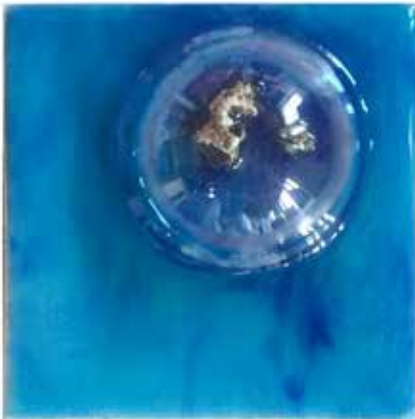
**208\_Submerged Gaïa**, 2019

White coral, polymer semi sphere,  
ink and resin on wooden panel.  
80x80 cm



## **Of The Overview Effect, Ann Grim says:**

*“With The Overview Effect exhibition I wanted share a possible future scenario of a submerged planet, where the livings would be cohabiting under multiple artificial atmospheric domes after a space evasion caused by rising waters. This is one of the many scenario I envisaged in the next millennium. I look forward to hearing the vision of fellow artists and experts during the week-long exhibition, talks and debates I will be hosting at The Cello Factory”.*



# CATALOGUE



*125\_Leaving Gaia*

2018

hd paste, ink and resine on canvas, 160x130 cm

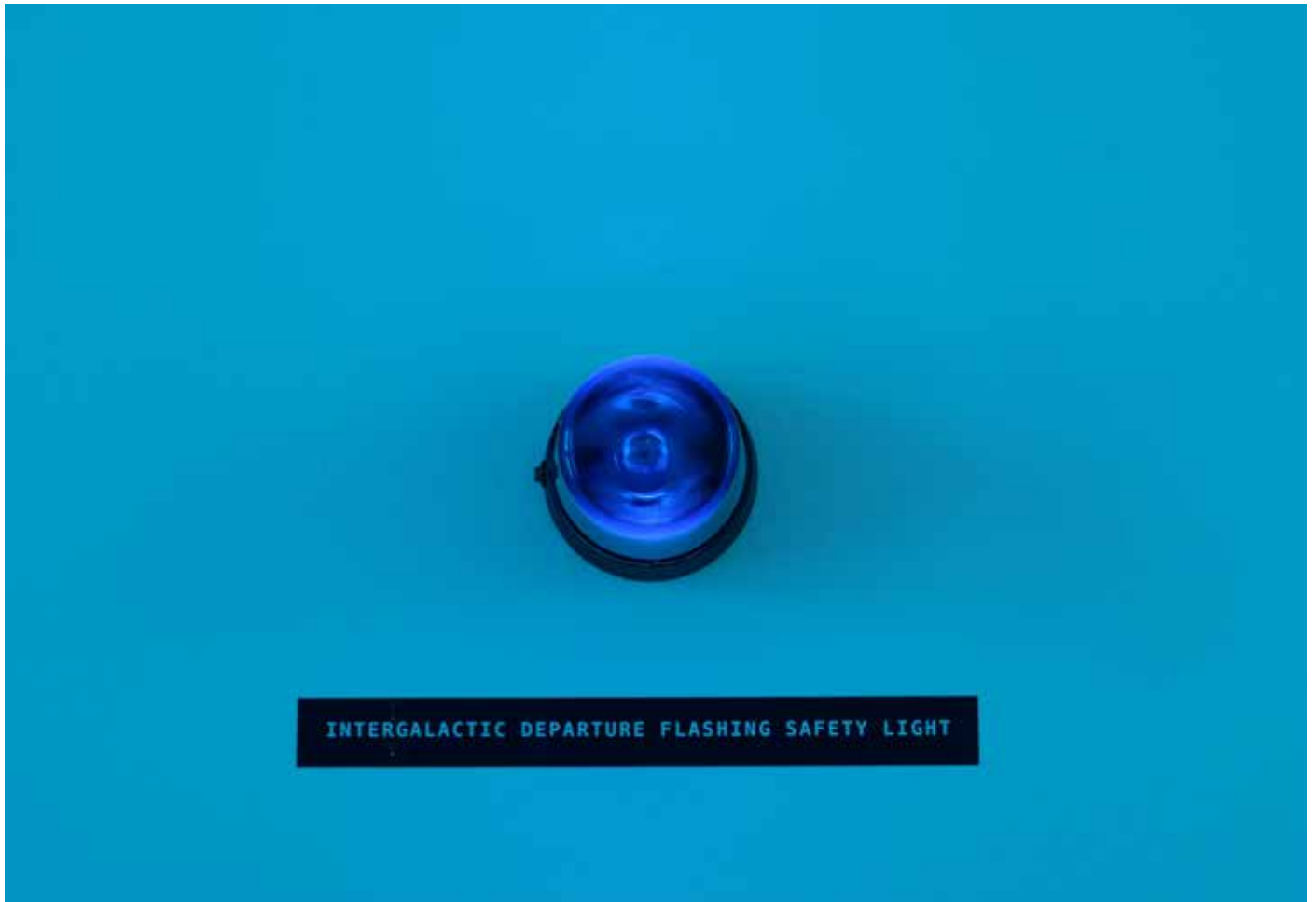




*130\_Leaving Gaia*

2018

hd paste, ink and resine on canvas, 160x130 cm



*133\_Intergalactic departure safety flashing light*

2018

Flashing light, print, acrylic, ink and resin, 160x130 cm



*152\_Leaving Earth*

2019

hd paste, 3D print, ink and resine on canvas, 30x30x4 cm



*153\_Leaving Earth*

2019

Hd paste, 3D print, ink and resine on canvas, 30x30x4 cm.



*154\_Leaving Earth*

2019

Hd paste, 3D print, ink and resine on canvas, 30x30x4 cm.



*197\_Leaving Earth*

2019

Hd paste, 3D print, ink and resine on canvas, 30x30x4 cm.

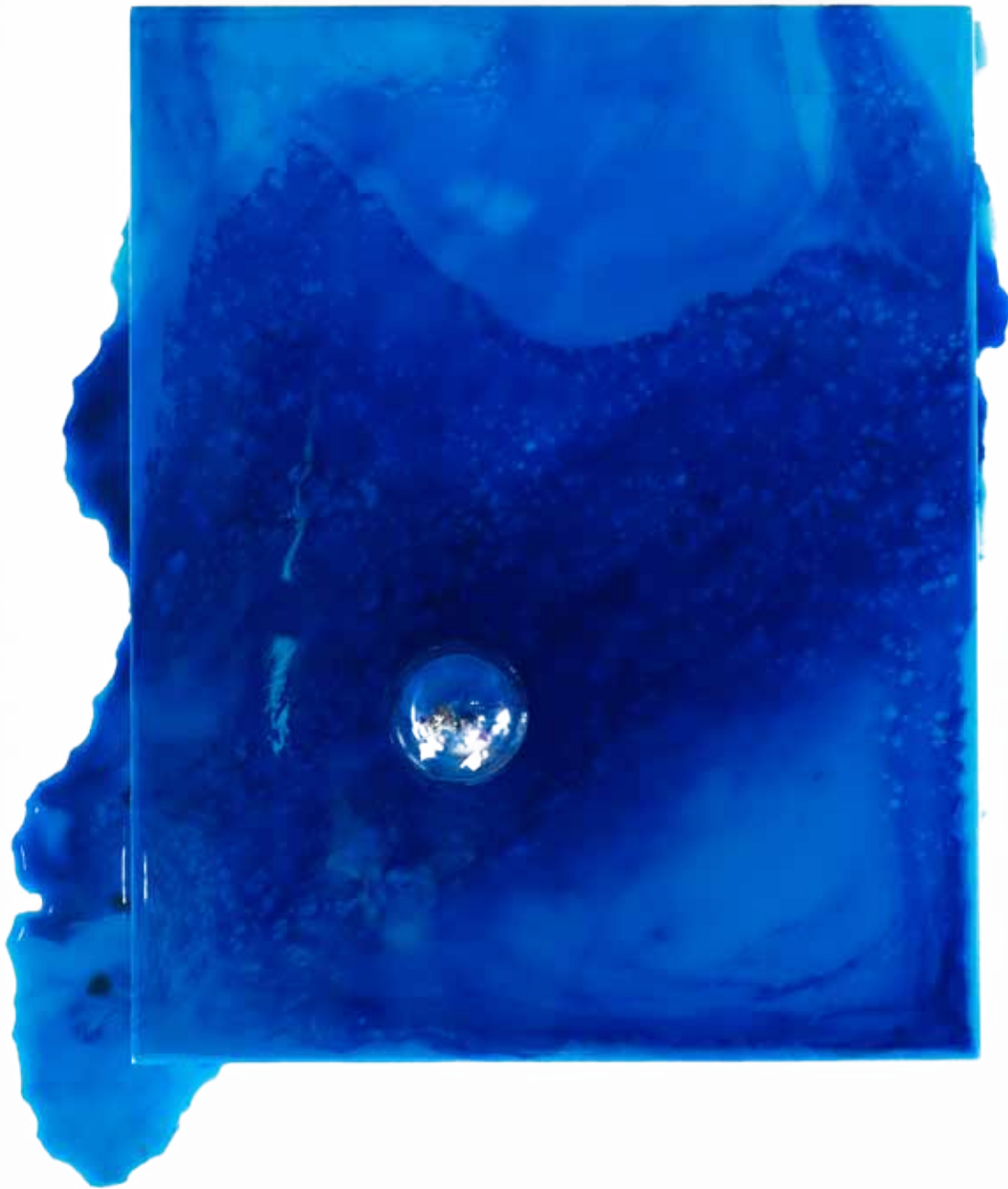


*201\_Leaving Earth*

2019

Hd paste, 3D print, ink and resine on canvas, 50x40x4 cm.





*245\_Submerged Gaia*

2019

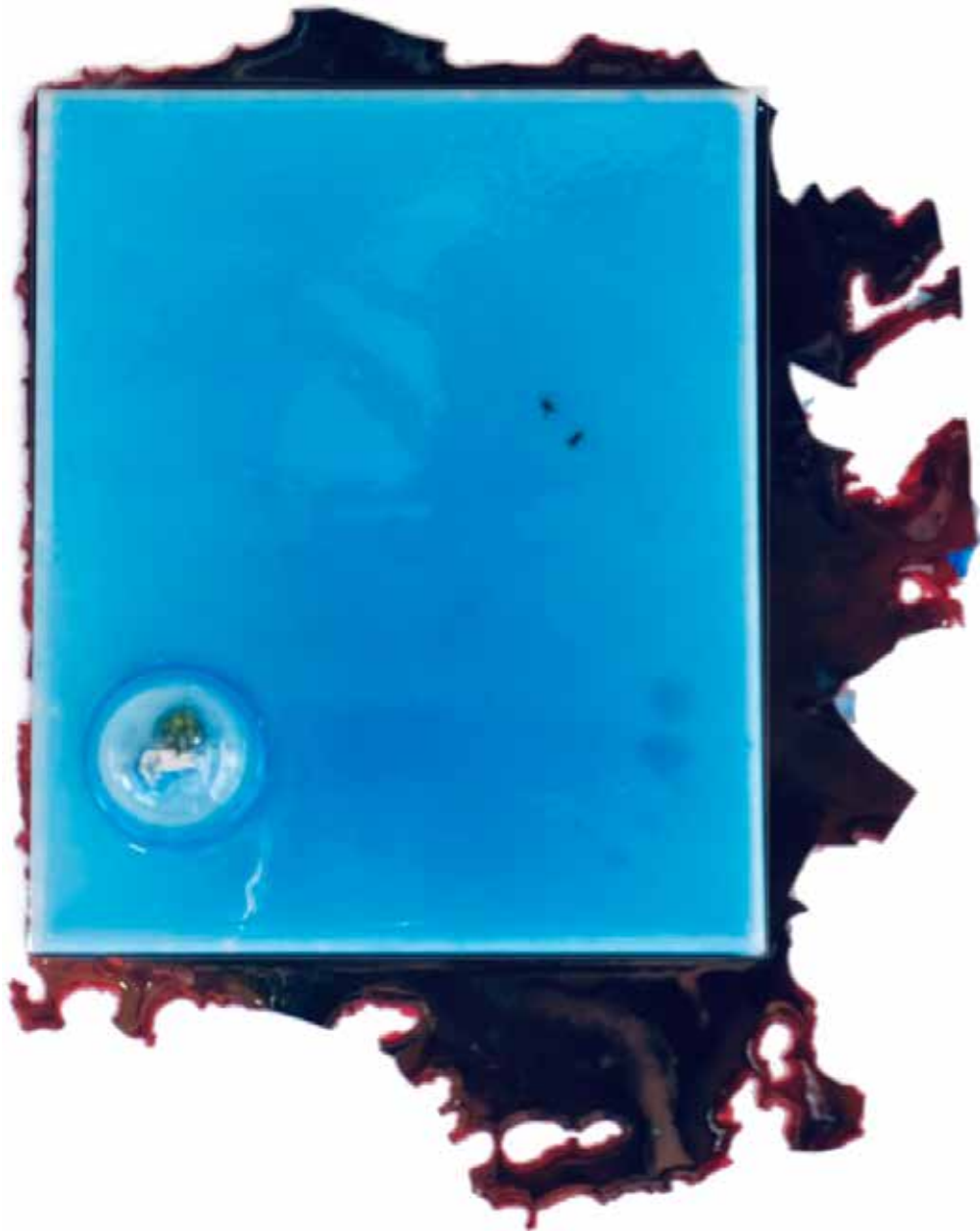
white coral, polymer semi sphere and vegetal, resin and ink on canvas,  
40x50 cm.



*245\_Submerged Gaia*

2019

white coral, polymer semi sphere and vegetal, resin and ink on canvas,  
40x50 cm.



*210\_Submerged Gaia*

2019

white coral, two flies, polymer semi sphere and vegetal,  
resin and ink on canvas, 25,5 x 30,5 cm.



*211\_Submerged Gaia*

2019

white coral, polymer semi speher and vegetal,  
resin and ink on canvas, 25,5 x 30,5 cm.



*212\_Submerged Gaia*

2019

white coral, polymer semi sphere and vegetal,  
resin and ink on canvas, 25,5 x 30,5 cm.



*213\_Submerged Gaia*

2019

white coral, polymer semi speher and vegetal,  
resin and ink on canvas, 25,5 x 30,5 cm.

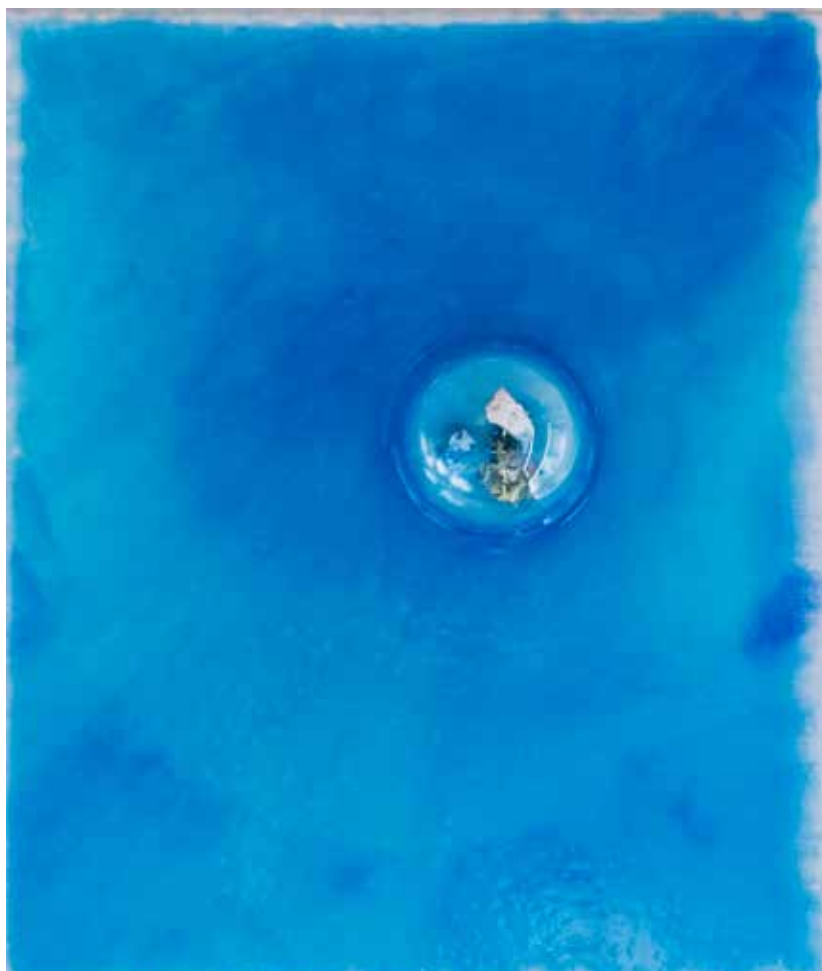


*214\_Submerged Gaia*

2019

white coral, polymer semi sphere and vegetal,  
resin and ink on canvas, 25,5 x 30,5 cm.





*215\_Submerged Gaia*

2019

white coral, polymer semi speher and vegetal,  
resin and ink on canvas, 25,5 x 30,5 cm.



*216\_Submerged Gaia*

2019

white coral, polymer semi sphere and vegetal,  
resin and ink on canvas, 25,5 x 30,5 cm.



*217\_Submerged Gaia*

2019

white coral, polymer semi sphere and vegetal,  
resin and ink on canvas, 25,5 x 30,5 cm.



*218\_Submerged Gaia*

2019

white coral, polymer semi sphere and vegetal,  
resin and ink on canvas, 25,5 x 30,5 cm.



*219\_Submerged Gaia*

2019

white coral, polymer semi speher and vegetal,  
resin and ink on canvas, 25,5 x 30,5 cm.



*220\_Submerged Gaia*

2019

white coral, polymer semi speher and vegetal,  
resin and ink on canvas, 25,5 x 30,5 cm.



*221\_Submerged Gaia*

2019

white coral, polymer semi sphere and vegetal,  
resin and ink on canvas, 25,5 x 30,5 cm.





*222\_Submerged Gaia*

2019

white coral, polymer semi sphere and vegetal,  
resin and ink on canvas, 25,5 x 30,5 cm.



*223\_Submerged Gaia*

2019

white coral, polymer semi sphere and vegetal,  
resin and ink on canvas, 25,5 x 30,5 cm.



*224\_Submerged Gaia*

2019

white coral, polymer semi sphere and vegetal,  
resin and ink on canvas, 25,5 x 30,5 cm.



*225\_Submerged Gaia*

2019

white coral, polymer semi speher and vegetal,  
resin and ink on canvas, 25,5 x 30,5 cm.



*226\_Submerged Gaia*

2019

white coral, polymer semi sphere and vegetal,  
resin and ink on canvas, 25,5 x 30,5 cm.



***227\_Submerged Gaia***

2019

white coral, polymer semi sphere and vegetal,  
resin and ink on canvas, 25,5 x 30,5 cm.



*228\_Submerged Gaia*

2019

white coral, polymer semi sphere and vegetal,  
resin and ink on canvas, 25,5 x 30,5 cm.



*229\_Submerged Gaia*

2019

white coral, polymer semi sphere and vegetal,  
resin and ink on canvas, 25,5 x 30,5 cm.





*230\_Submerged Gaia*

2019

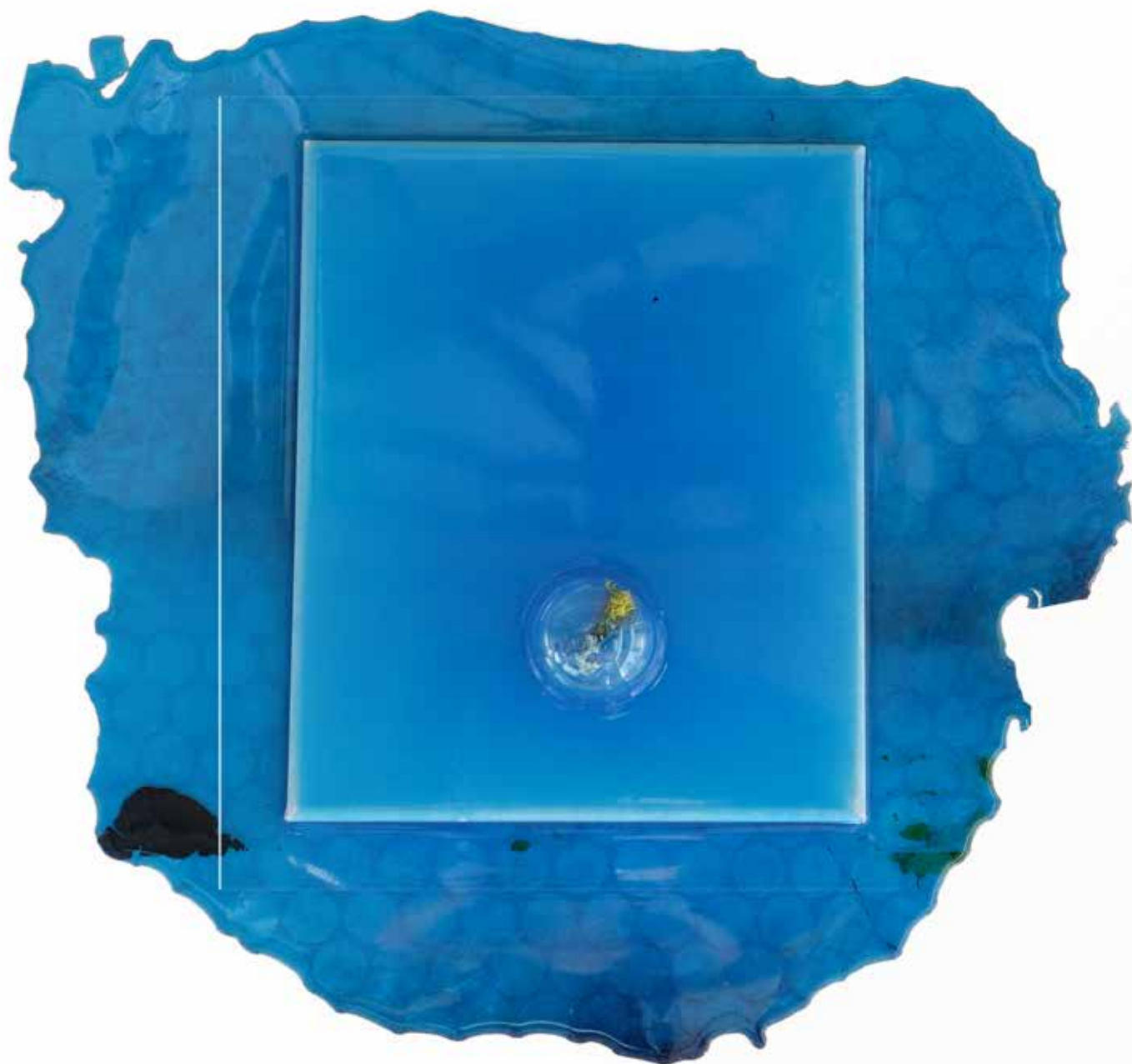
white coral, polymer semi sphere and vegetal,  
resin and ink on canvas, 25,5 x 30,5 cm.



*231\_Submerged Gaia*

2019

white coral, polymer semi speher and vegetal,  
resin and ink on canvas, 25,5 x 30,5 cm.



*232\_Submerged Gaia*

2019

white coral, polymer semi sphere and vegetal,  
resin and ink on canvas, 25,5 x 30,5 cm.



*233\_Submerged Gaia*

2019

white coral, polymer semi sphere and vegetal,  
resin and ink on canvas, 25,5 x 30,5 cm.



*234\_Submerged Gaia*

2019

white coral, polymer semi sphere and vegetal,  
resin and ink on canvas, 25,5 x 30,5 cm.



*235\_Submerged Gaia*

2019

white coral, polymer semi speher and vegetal,  
resin and ink on canvas, 25,5 x 30,5 cm.



*236\_Submerged Gaia*

2019

white coral, polymer semi sphere and vegetal,  
resin and ink on canvas, 25,5 x 30,5 cm.



*237\_Submerged Gaia*

2019

white coral, polymer semi speher and vegetal,  
resin and ink on canvas, 25,5 x 30,5 cm.





*238\_Submerged Gaia*

2019

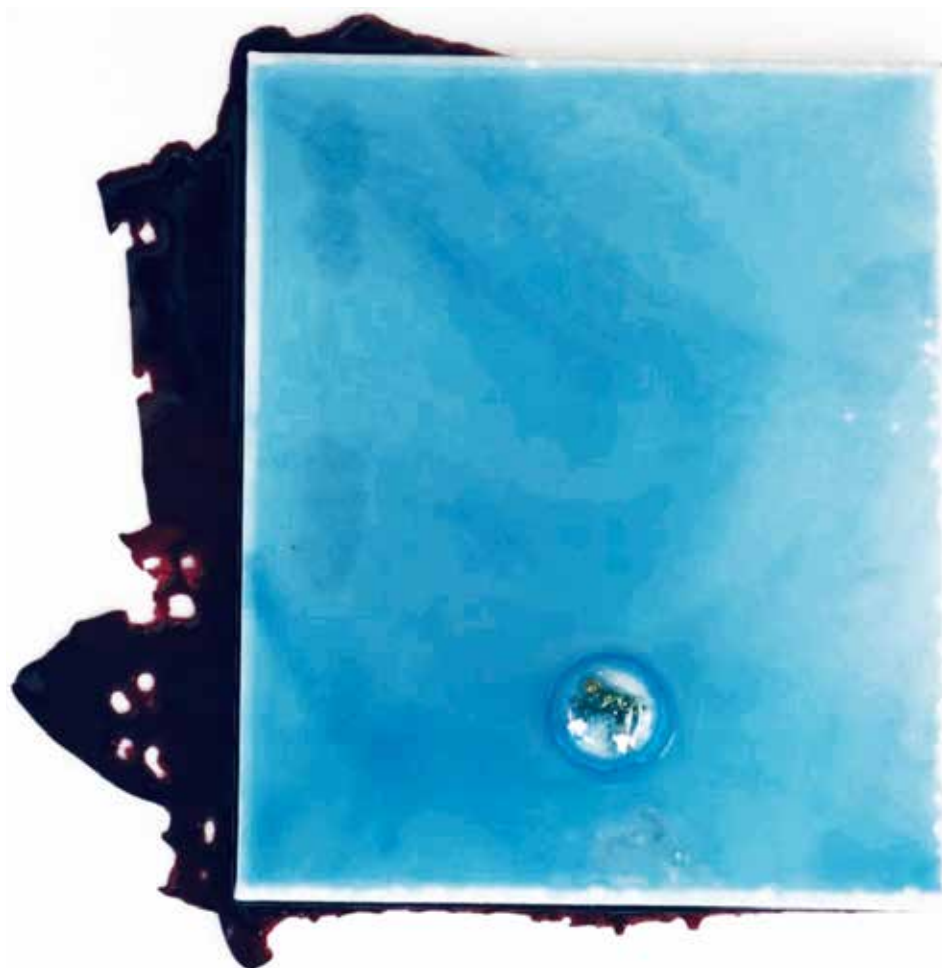
white coral, polymer semi sphere and vegetal,  
resin and ink on canvas, 25,5 x 30,5 cm.



*239\_Submerged Gaia*

2019

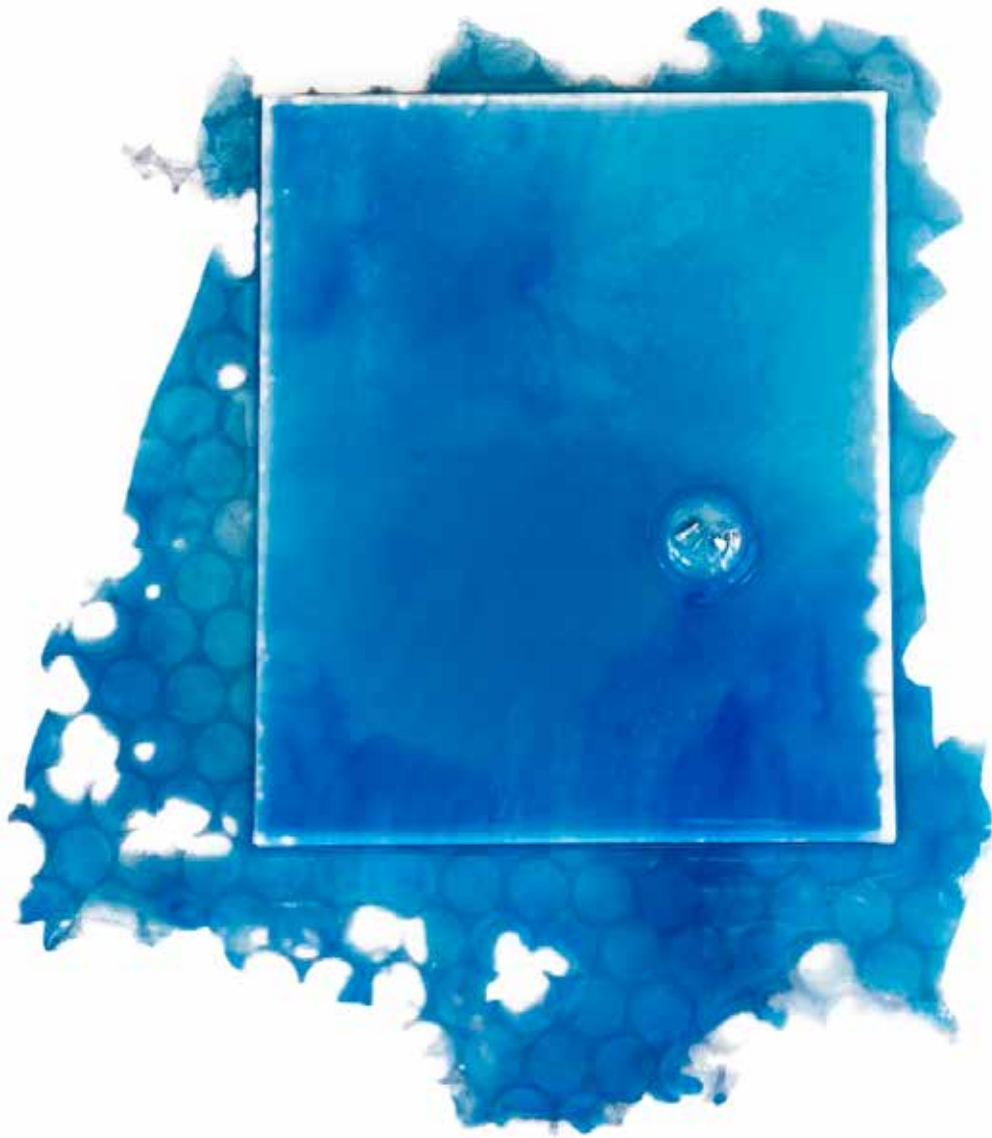
white coral, polymer semi sphere and vegetal,  
resin and ink on canvas, 25,5 x 30,5 cm.



*240\_Submerged Gaia*

2019

white coral, polymer semi sphere and vegetal,  
resin and ink on canvas, 25,5 x 30,5 cm.



*241\_Submerged Gaia*

2019

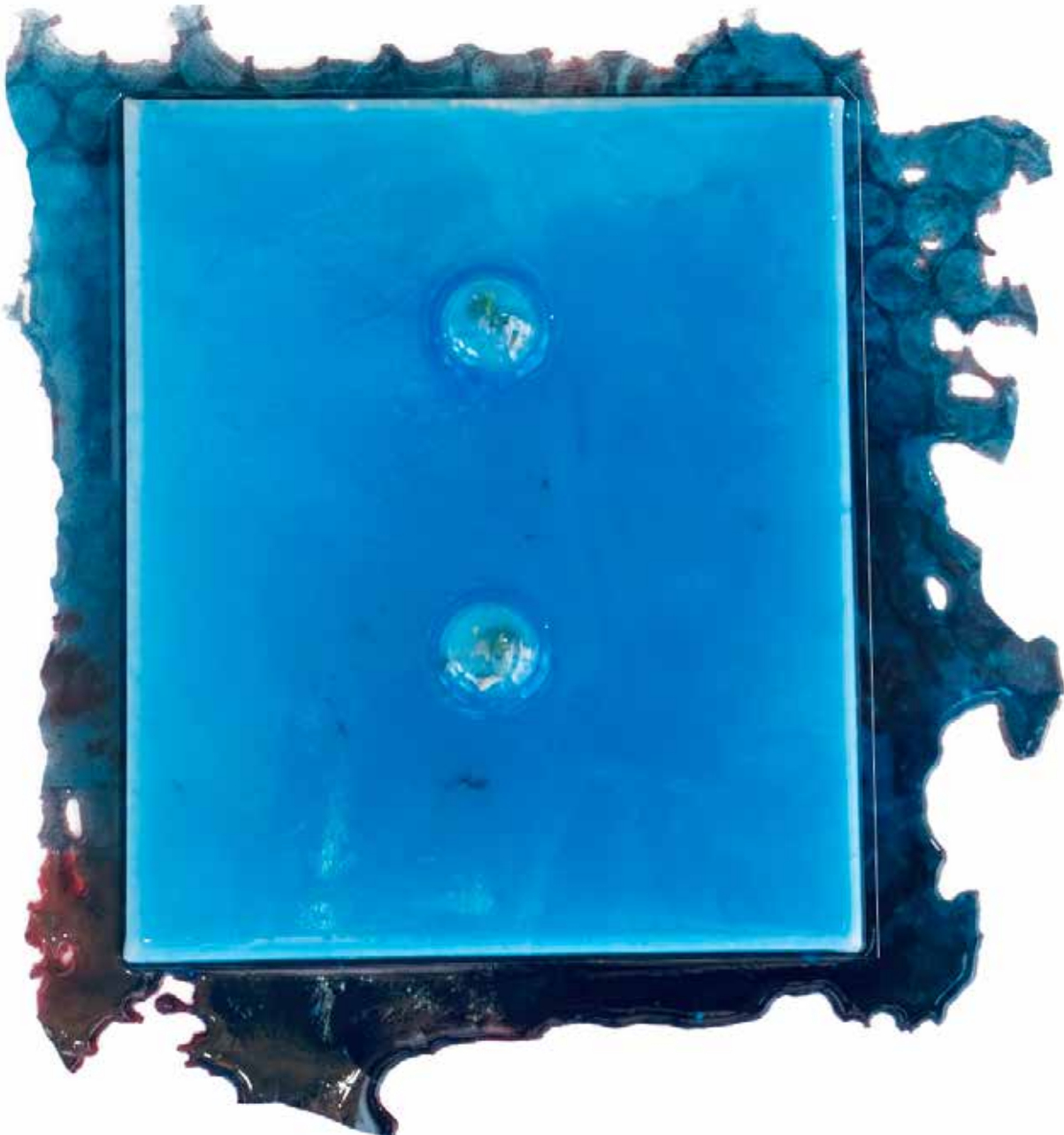
white coral, polymer semi sphere and vegetal,  
resin and ink on canvas, 25,5 x 30,5 cm.



*242\_Submerged Gaia*

2019

white coral, polymer semi sphere and vegetal,  
resin and ink on canvas, 25,5 x 30,5 cm.



*243\_Submerged Gaia*

2019

white coral, polymer semi sphere and vegetal,  
resin and ink on canvas, 25,5 x 30,5 cm.



*244\_Submerged Gaia*

2019

white coral, polymer semi sphere and vegetal,  
resin and ink on canvas, 25,5 x 30,5 cm.



# ANN GRIM



I am a cross-disciplinary artist with a futuristic vision.

I grew up between Buenos Aires, Paris, Cape Town, Montevideo and London where I currently live and work.

I explore the possibility of different faraway futures.

## WORK

Between dreams and reality, I explore the possibility of different futures and the scenarios of eternal life, evolution of humankind, and space migration. I express the intricacy of social, urban and cultural issues such as the impact of global climate change on humankind, bio singularity, reproduction and the fabric of new human interactions.

Cartography of submerged planets / sharks / physiological evolution of the livings are three recurrent visual themes.

My works range from paintings, to sculptures, installations, films but also, and more recently, performances and virtual reality experiences.

I continue to evolve internationally with exhibitions in Paris, Miami, London, Venice, Oaxaca...

## EXHIBITIONS

July 2019: A journey to 3047, a solo show at the hClub, Covent Garden, **London** curated by Ali Hillman.

February 2018 -The Never Ending Journey, Installation and performance at EMBRACING THE UNDERDOG -Q-Park 20 Newport Place, Gerrard Street **London**, With The London Group and Friends Curated by Susan Haire Supported by Geoff Leong Foundation.

Ann was featured on the homepage of **Artlyst** for her performance the week after the exhibition.

October 2017 - Nothing left but the soul, Exhibition and performance at CRASH - Q Park satellite exhibition of Frieze, Cavendish Square, **London**. Curated by Vanya Balogh Supported by **Geoff Leong Foundation**

May-November 2019 (and also part of the 57th Biennale): Beyond the Unknown, video art exhibited at Empire II, **58th Venice Biennale**, group show of 140 artists including Gavin Turk, Sarah Sparkes, Fiona Banner, Cedric Christie and curated by Vanya Balogh.

September 2017-September 2018: Where are we now? A trio of paintings exhibited in Room 10 of the Hospital Club, Covent Garden, **London** as part of their yearly Room Art program curated by Ali Hillman.

I also have exhibited in various museums and galleries such as Oaxaca Contemporary Art Museum or in Paris including Palais de Tokyo, la Maison Rouge, l'Aquarium de Paris.



**FOR MORE INFO PLEASE CONTACT**

**Studio manager consultant**

**Anne Baines**

**[anne@anngrim.com](mailto:anne@anngrim.com)**